

REF.:4796

Andorra | Sotheby's
INTERNATIONAL REALTY

CountryHouse for sale in Berga

España - Berga

Superficie	Habitaciones	Baños	Precio
700 m ²	9	8	810.000 €

Contáctenos para recibir más
información o solicitar una visita

+376 872 222

info@sir.ad



REF.:4796

CountryHouse for sale in Berga

España - Berga

Superficie	Habitaciones	Baños	Precio
700 m²	9	8	810.000 €

Contáctenos para recibir más información o solicitar una visita

 +376 872 222

 info@sir.ad

This fully renovated 700 m2 farmhouse is spread over a ground floor and two floors. It has nine double rooms, of which six of them have a built-in bathroom, and has 3 more bathrooms. The farmhouse has two large living rooms with a fireplace to give a warm and cozy atmosphere, a dining room of more than 90 meters with a bar, a fireplace and large windows with access to the beautiful garden that surrounds the property. Next to the dining room we will find the fully furnished office kitchen with good finishes. The property has a garage for several cars, electricity, water and gas services with a 4000 liter propane tank. In the farmhouse we will find a well in which water is born and can be used for various purposes. The entire 3,600 m2 plot has a two meter high metal enclosure. The farmhouse was restored in the nineties and does not need reforms.

Características

 Calefacció

 Parking

 Jardí

 Zona verda

 Jardí

REF.:4796

Andorra | Sotheby's
INTERNATIONAL REALTY

CountryHouse for sale in Berga

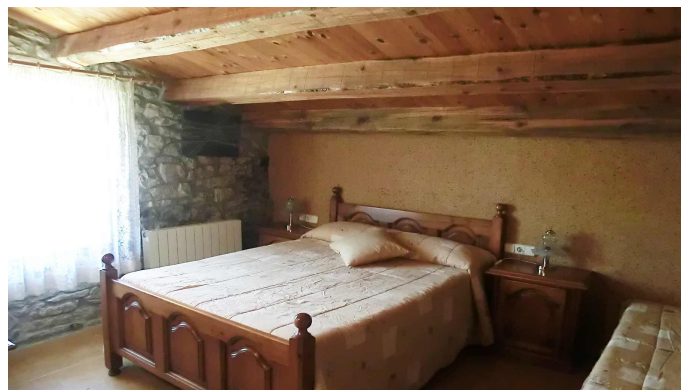
España - Berga

Superficie	Habitaciones	Baños	Precio
700 m ²	9	8	810.000 €

Contáctenos para recibir más información o solicitar una visita

+376 872 222

info@sir.ad



Sotheby's International Realty® is a registered trademark licensed to Sotheby's International Realty Affiliates LLC. Each Sotheby's International Realty® office is independently owned and operated.

Andorra Sotheby's International Realty
Calle Santa Anna, 14 AD700 Escaldes-Engordany Principado de Andorra
Tel: +376 872 222 · Email: info@sir.ad

www.andorra-sothebysrealty.com